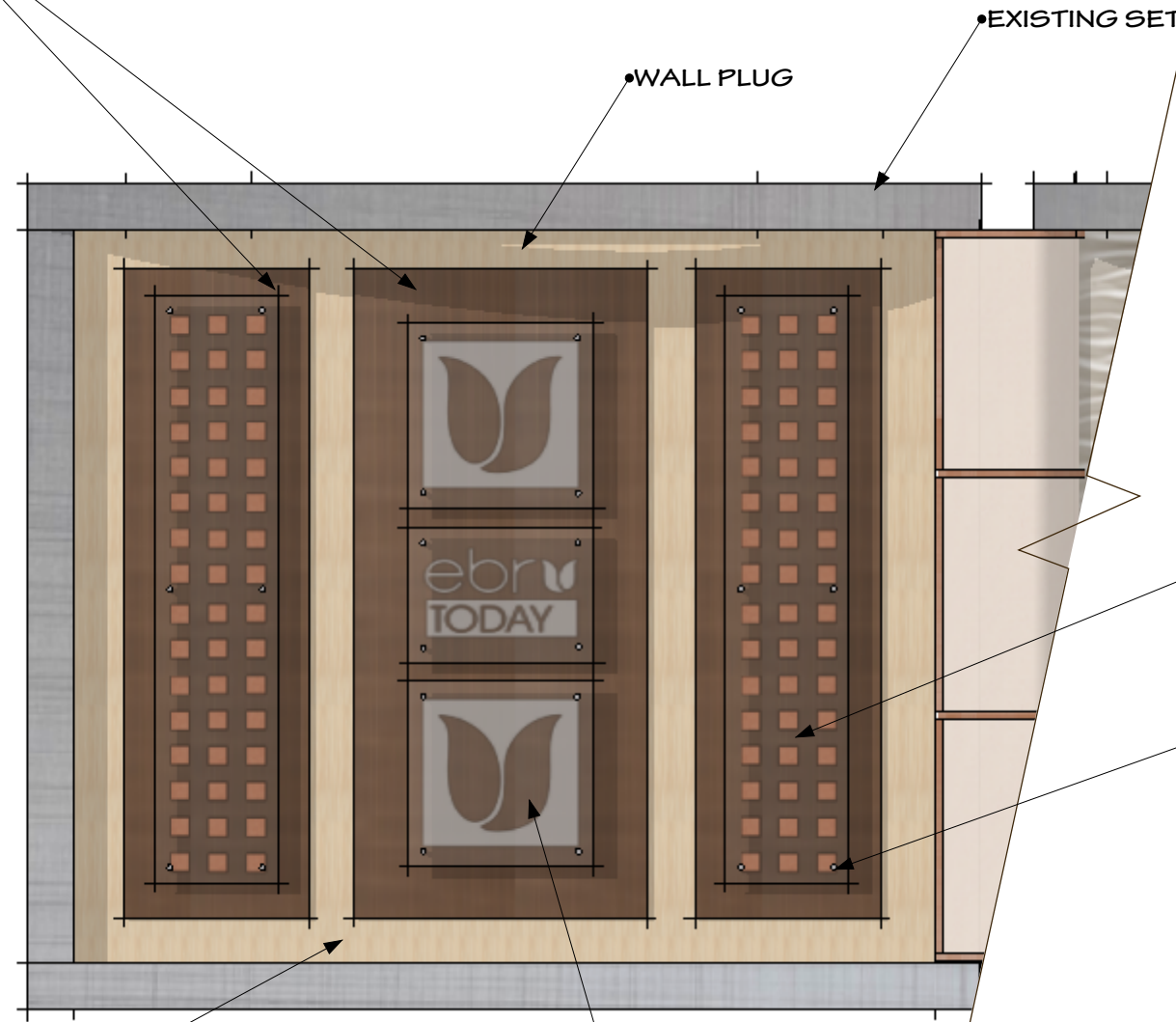


FORMICA LAMINATE
#M5392 COPPER VEIL



FORMICA LAMINATE
#6212-58 WHEAT STRAND



SEE P. 7 FOR 1/4" PLEXIGLASS
PANEL DETAIL

3/4" d X 2" STANDOFF BRACKET



LOGO FROSTED ONTO
1/4" CLEAR PLEXIGLASS
SEE P. 8 FOR DETAIL

ELEVATION -- CAMERA LEFT WALL PLUG
showing materials

SCALE: 1/2" = 1'-0"

Ebru Today

REVISED 12.12.11

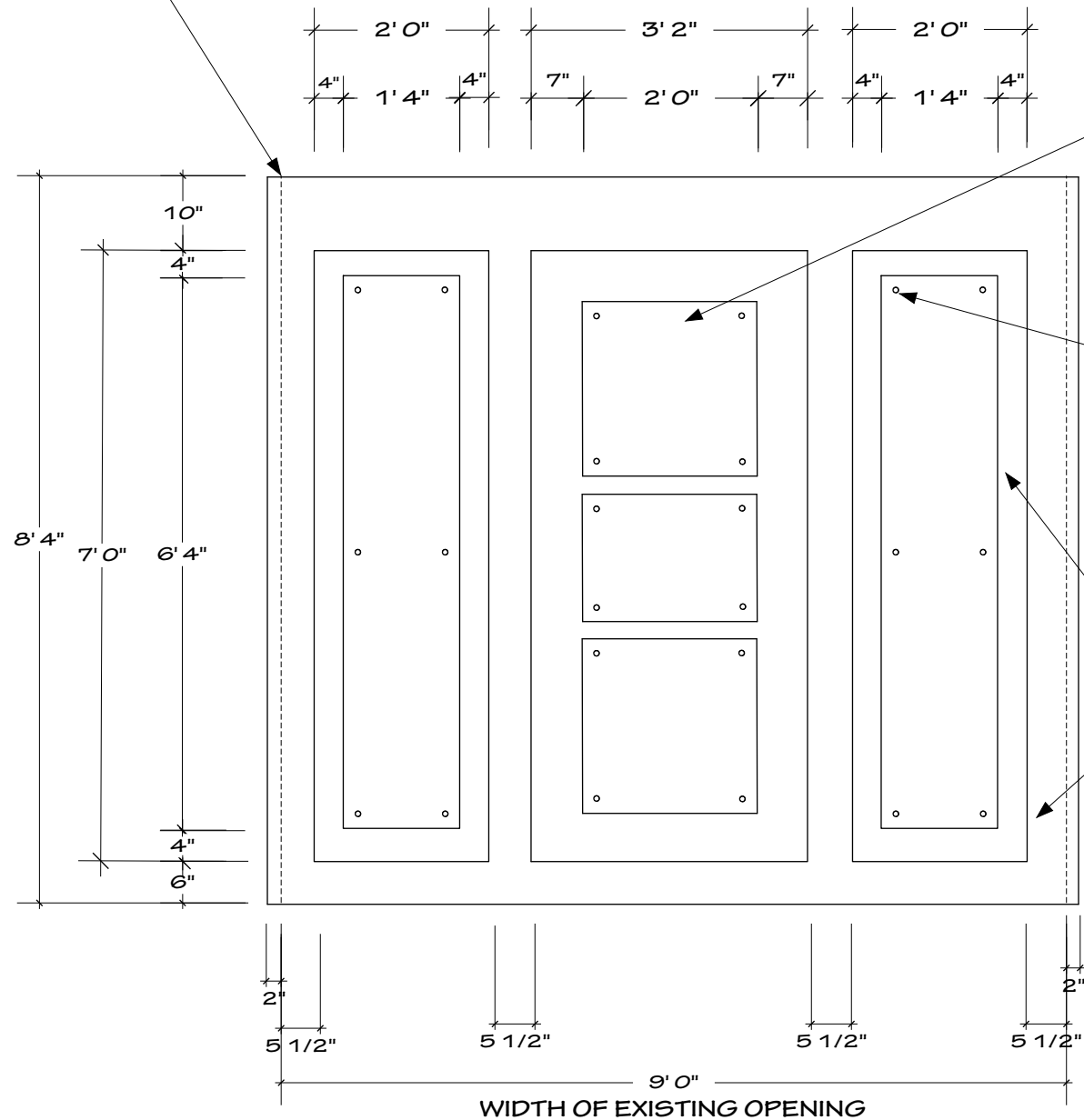
ELEVATION -- CAMERA LEFT WALL PLUG
showing materials

Ebru TV/ Everest Productions

Shana McKay Burns, designer

Date 12.12.11 | Scale 1/2" = 1'-0"

EDGE OF OPENING OF EXISTING SET
ATTACH WALL PLUG OVERLAP
BEHIND EXISTING FRAME



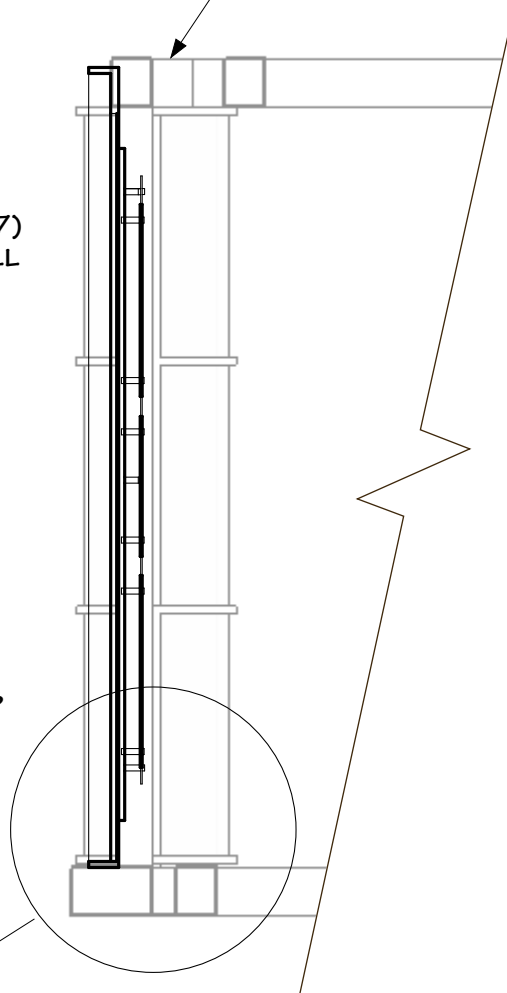
1/4" PLEXI SIGN
W/ FROSTED LOGO
SEE P. 8 FOR DETAIL

1/4" PLEXI PANEL (SEE P. 7)
SUSPENDED 2" FROM WALL
W/ 3/4" X 2" STANDOFF
BRACKET

3/4" MDF PANEL
LAMINATED W/ #5392
COPPER VEIL & APPLIED
TO FACE

3/4" MDF PANEL
LAMINATED W/ #6212-58
WHEAT STRAND

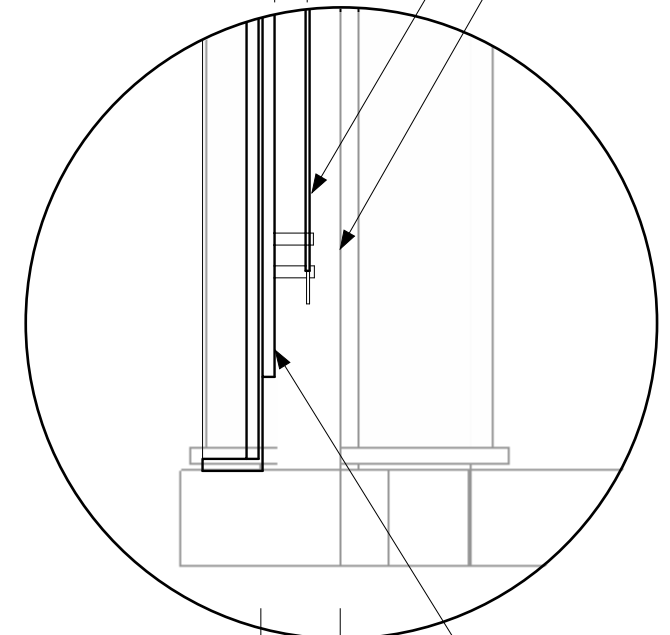
EXISTING SET



D1

1/4" PLEXI PANEL (SEE
P.7) SUSPENDED 2"
FROM WALL W/ 3/4" X 2"
STANDOFF BRACKET

FRONT EDGE OF
EXISTING FRAME

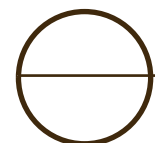


3/4" MDF PANEL LAMINATED
W/ #5392 COPPER VEIL

D1

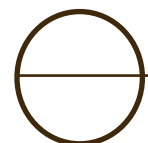
DETAIL 1

SCALE: 1" = 1'-0"



ELEVATION -- CAMERA LEFT WALL PLUG

SCALE: 1/2" = 1'-0"



SECTION -- CAMERA LEFT WALL PLUG

SCALE: 1/2" = 1'-0"

Ebru Today

REVISED 12.12.11

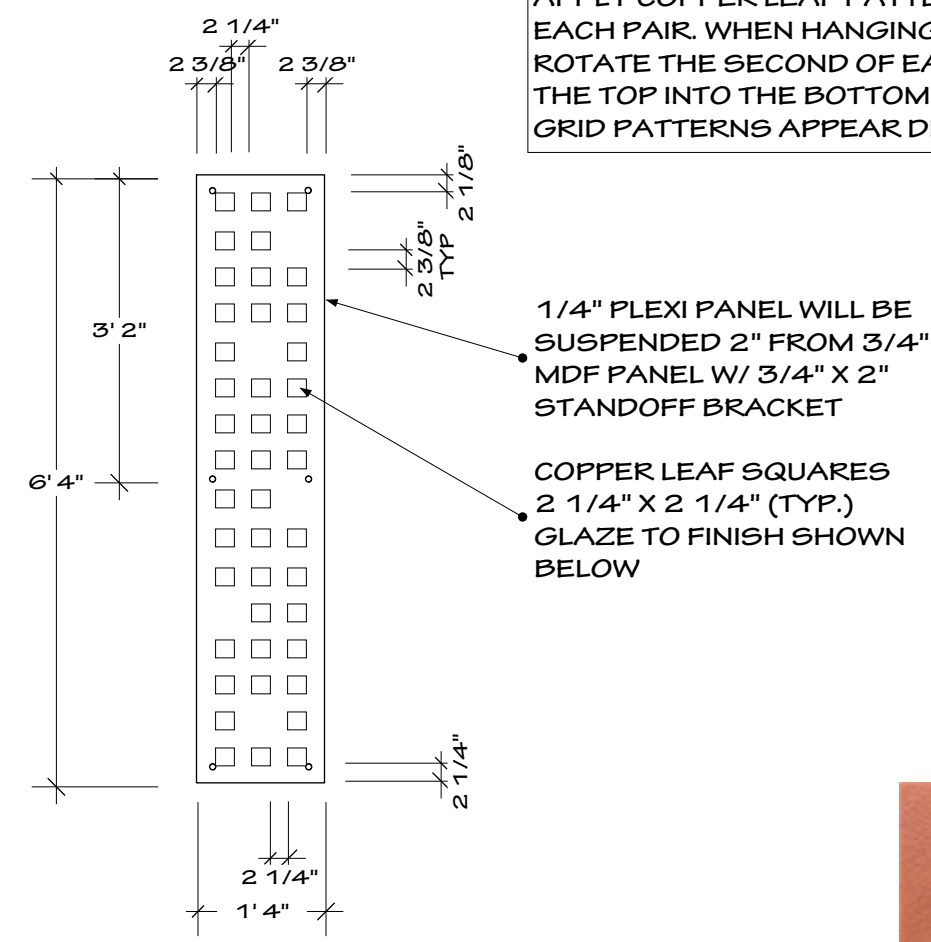
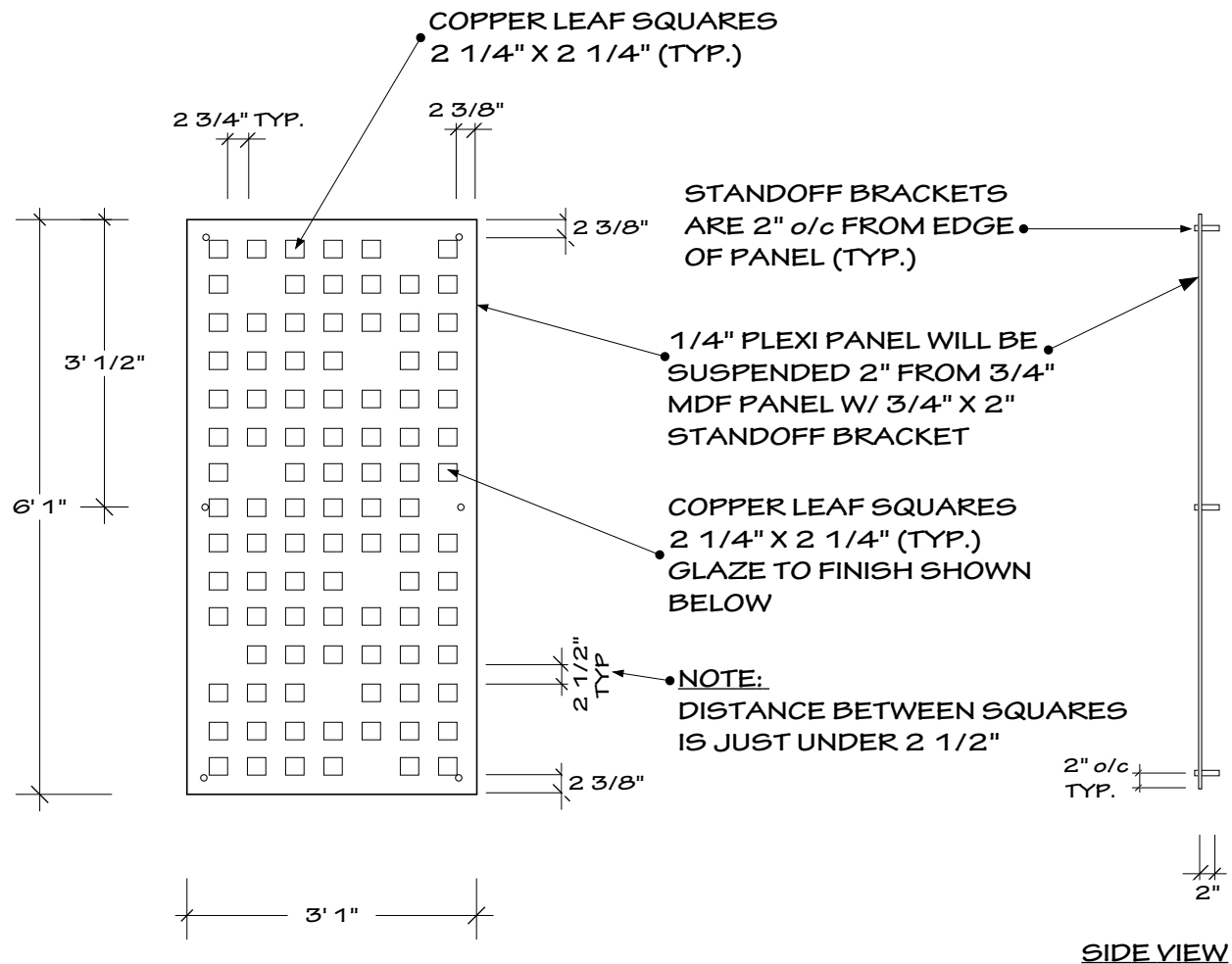
ELEVATION -- CAMERA LEFT WALL PLUG

Ebru TV/ Everest Productions

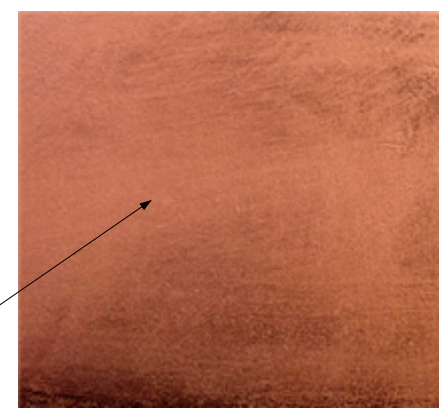
Shana McKay Burns, designer

Date 12.12.11 | Scale 1/2" = 1'-0"

002



NOTE
APPLY COPPER LEAF PATTERN AS SPECIFIED FOR EACH PAIR. WHEN HANGING THE FINISHED PANELS, ROTATE THE SECOND OF EACH PAIR 180° (MAKING THE TOP INTO THE BOTTOM). THIS WILL MAKE THE GRID PATTERNS APPEAR DIFFERENT.



GLAZE COPPER LEAF TO SAMPLE

ELEVATION -- CAMERA RGT. HANGING WALL PANELS
BUILD TWO
SCALE: 1/2" = 1'-0"

ELEVATION -- CAMERA LEFT HANGING WALL PANELS
BUILD TWO
SCALE: 1/2" = 1'-0"

Ebru Today

REVISED 12.12.11

ELEVATION--DECORATIVE PLEXI PANELS

Ebru TV/ Everest Productions
Shana McKay Burns, designer
Date 12.12.11 | Scale 1/2" = 1'-0"